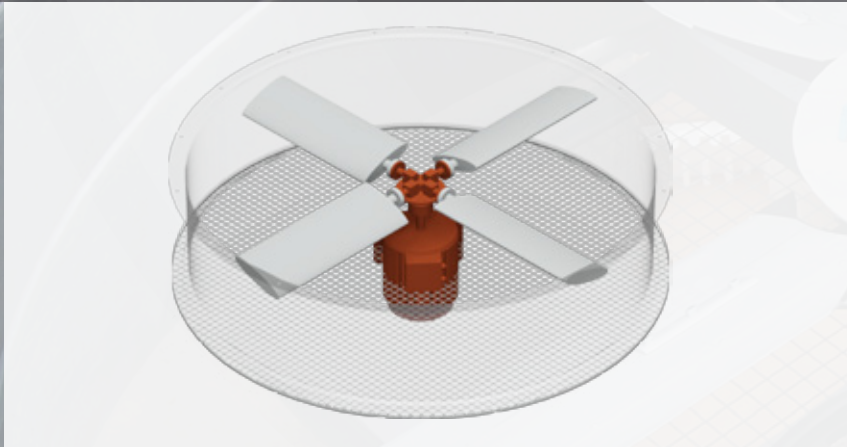


## Axial Fans

Axial fans are always used for air-cooled plans. Directly driven axial fans are used up to a diameter of 1400 mm. Beyond this diameter either v-belt or gear driven fans are used.



### Axial fan with direct drive

Sound requirement: Standard  
Blade material: fibre glass, Aluminium  
Blade number: four to eight  
Used range of diameter: 500 to 1400 mm



### Axial fan with v-belt drive

Sound requirement: Standard  
Blade material: fibre glass, Aluminium  
Blade number: four to eight  
Used range of diameter: 1400 to 10000 mm

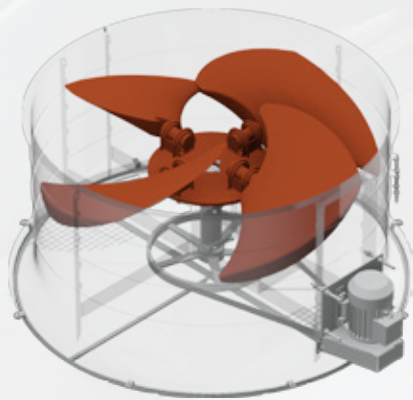


### **Axial fan with aluminium blades**

Sound requirement: Standard  
Blade material: Aluminium  
Blade number: four to eight  
Used ranges of diameters:  
v-belt drive: 1400 to 3000 mm  
direct drive: 500 to 1250 mm

### **Axial fan with fibre glass blades**

Sound requirement: Standard / Low Noise  
Blade material: Fibre glass  
Blade number: four to eight  
Used ranges of diameters:  
v-belt drive: 1400 to 10000 mm  
direct drive: 800 to 1250 mm



**Axial fan with fibre glass blades**

Sound requirement: Super Low Noise

Blade material: Fibre glass

Blade number: four to six

Used range of diameters: 900 to 10000 mm